

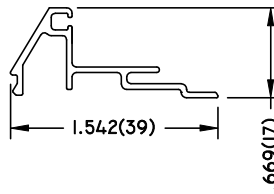
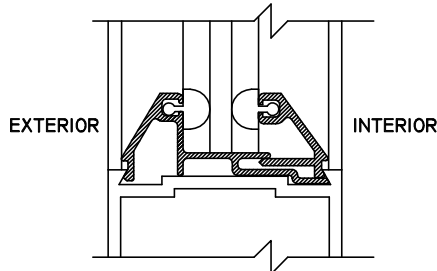
STANLEY

GLASS STOP EXTRUSION OPTIONS

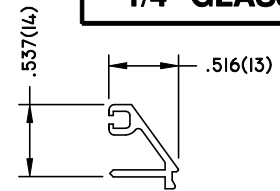
**DURA-GLIDE
3000**

1/4" GLASS

HORIZONTAL



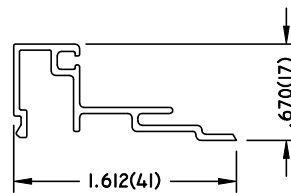
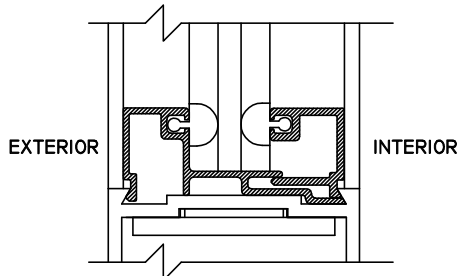
**GUTTER-BEVELED
EXTRUSION**



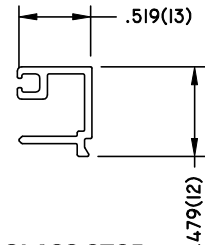
**GLASS STOP-BEVELED
EXTRUSION**

**GUTTER-BEVELED EXTRUSION
(RUNS HORIZONTALLY)**

VERTICAL



**GLASS STOP-GUTTER
EXTRUSION**

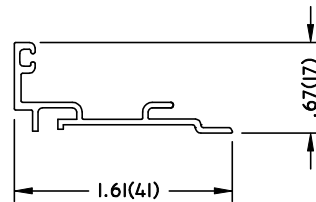
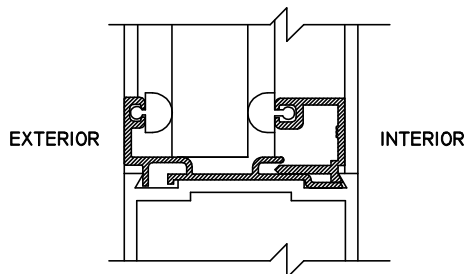


**GLASS STOP
EXTRUSION**

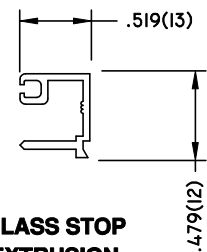
**GUTTER EXTRUSION
(RUNS VERTICALLY)**

NOTE: 5/8" GLASS MAXIMUM SIZE FOR "SO" PANEL(S)

5/8" GLASS



**GLASS STOP-GUTTER
EXTRUSION**

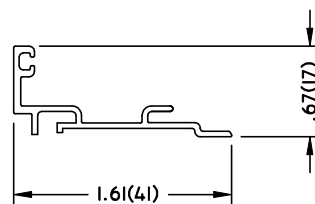
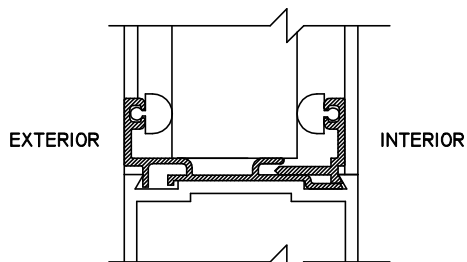


**GLASS STOP
EXTRUSION**

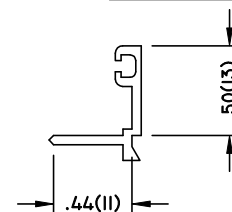
**GLASS STOP
ASSEMBLY**

NOTE: GLASS STOPS FOR 1" GLASS - AVAILABLE FOR "SX" DOOR(S) AND TRANSOM

1" GLASS



**GLASS STOP-GUTTER
EXTRUSION**



**GLASS STOP
EXTRUSION**

**GLASS STOP
ASSEMBLY**