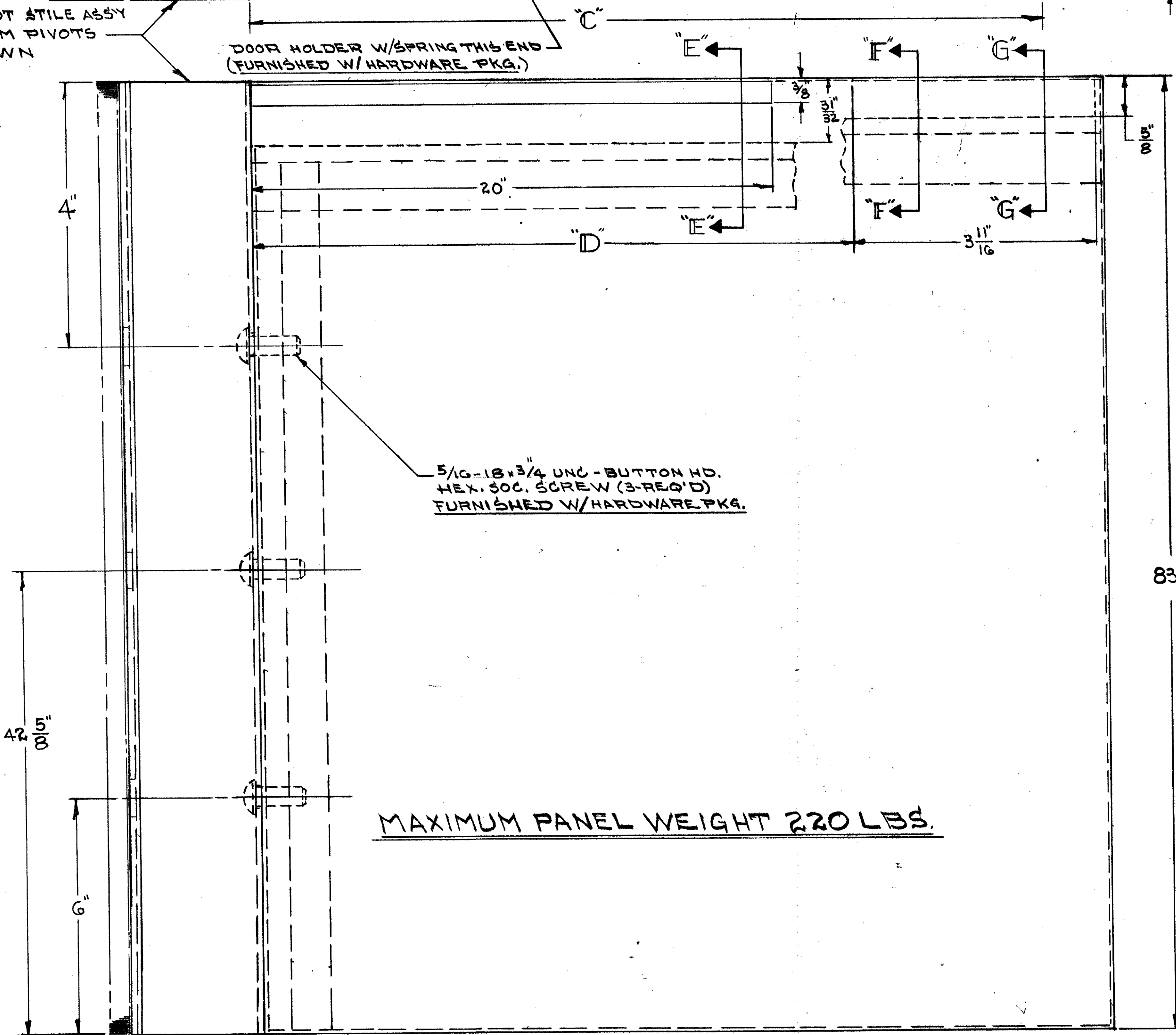
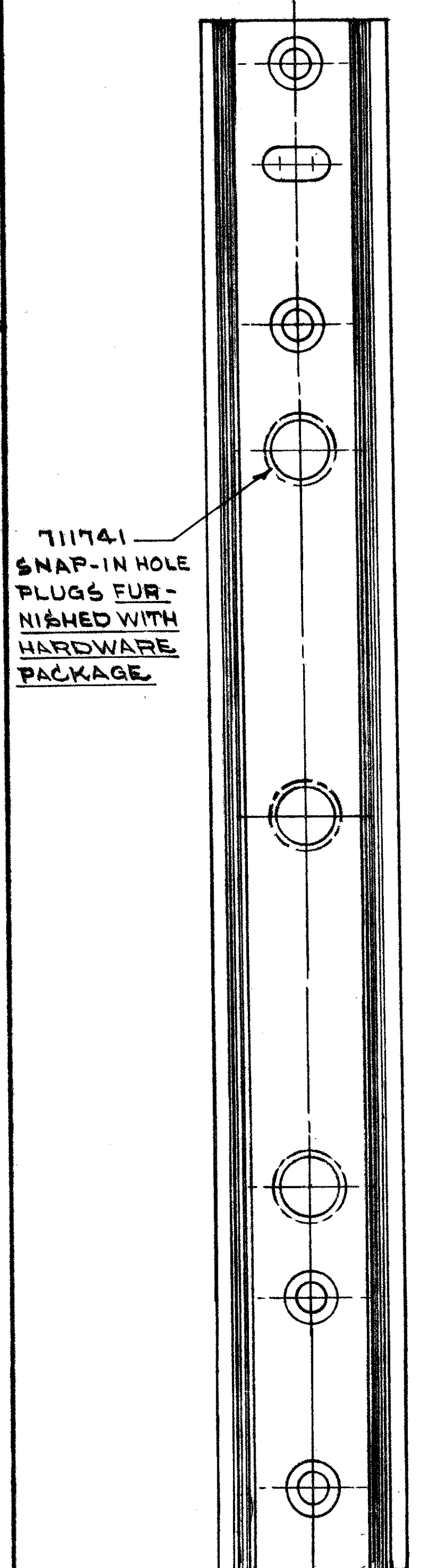
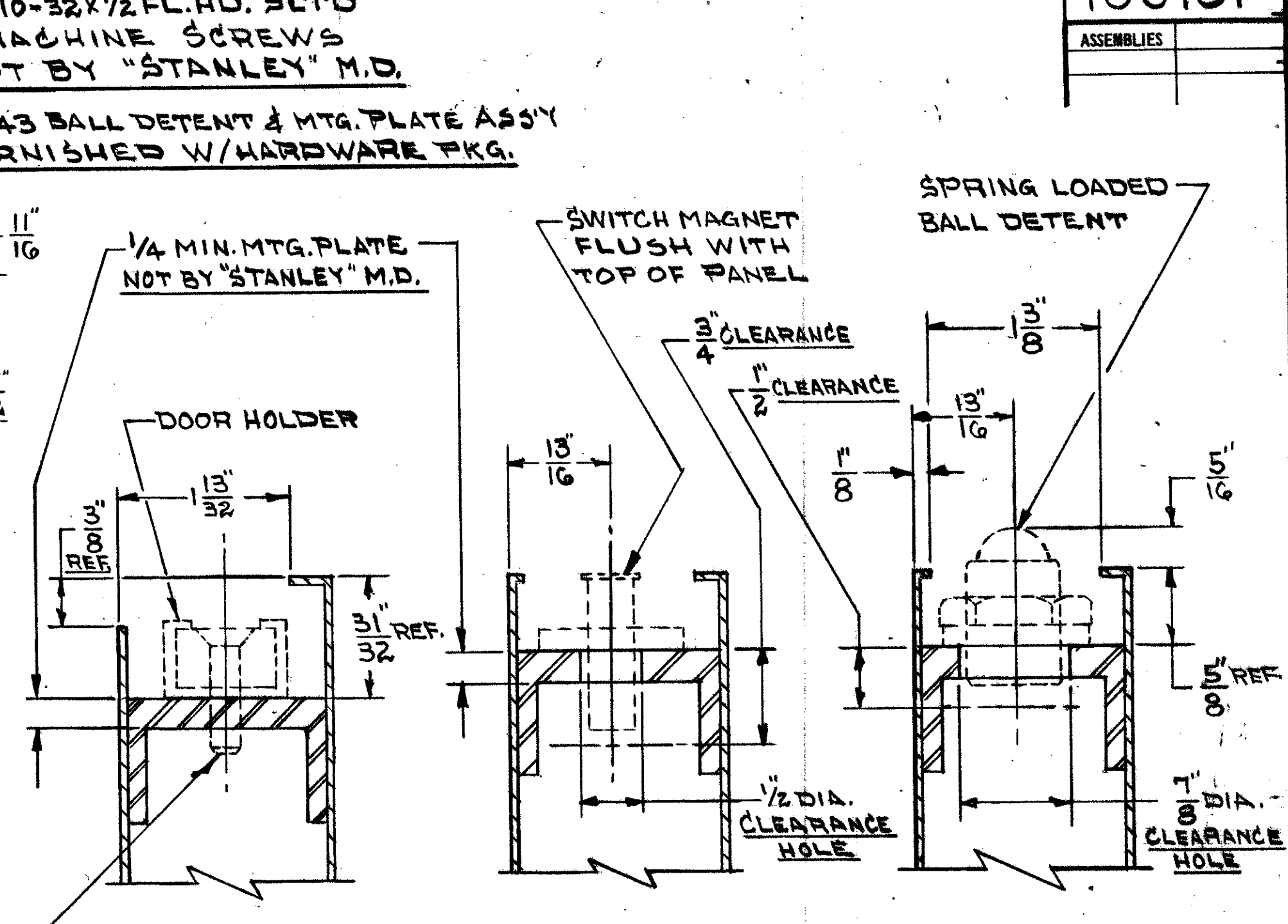
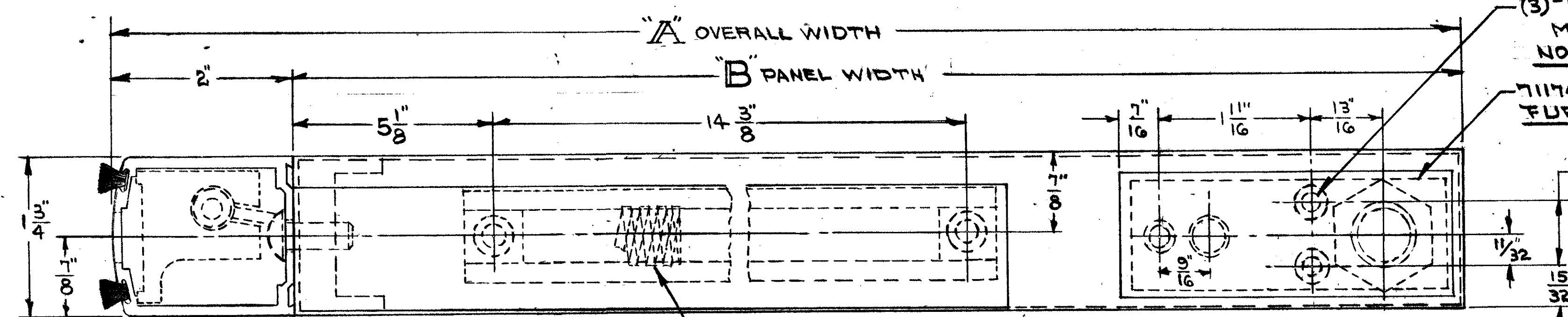


| MODEL NO. | W | H | W | H |
|-----------|-----|-----|---------|----------|
| 3030 | 42" | 40" | 38 1/4" | 35 5/16" |
| 3042 | 48" | 46" | 44 1/4" | 41 5/16" |
| 3044 | 51" | 49" | 47 1/4" | 44 5/16" |
| 3048 | 54" | 52" | 50 1/4" | 47 5/16" |
| 3348 | 30" | 28" | 27 1/8" | 24 3/16" |
| 3360 | 36" | 34" | 33 1/8" | 30 3/16" |
| 3372 | 42" | 40" | 39 1/8" | 36 3/16" |

| ASSEMBLIES |
|------------|
| |



MAXIMUM PANEL WEIGHT 220 LBS.

DOOR PREPARATION DRAWING
HOLLOW METAL

| 98-21 | 5/14/98 | B) 1/4-20 WAS #12-24 | AL |
|-------------------------|---------|----------------------|-------|
| A) REVISED AND RELEASED | | PILOT LOT RELEASE | |
| ECN | DATE | REVISION | APP'D |

"This Document is the Property of the Stanley Works and is Furnished on the condition that it is not to be disclosed, reproduced in whole or in part, or used for manufacture for anyone other than the Stanley Works without its written consent."

| | |
|------------|------------|
| SPEC. NO.: | 1. MATL: |
| 1. GRADE: | 2. SIZE: |
| 3. TEMPER: | 4. FINISH: |
| 6. | |

#30" PANEL ASSY R.H. (H.M.) DESIGNER PACKAGE
 DURA-GLIDE 3000
 SCALE 1/1
STANLEY DOOR OPERATING EQUIPMENT
 DIVISION OF THE STANLEY WORKS, FARMINGTON, CONN.

101601

MUST BE FREE FROM BURRS & ROUGH EDGES
 DO NOT SCALE THIS DRAWING - TOLERANCES UNLESS OTHERWISE SPECIFIED - FRACTIONS ± .015, DECIMALS ± .005, ANGULAR ± 1'