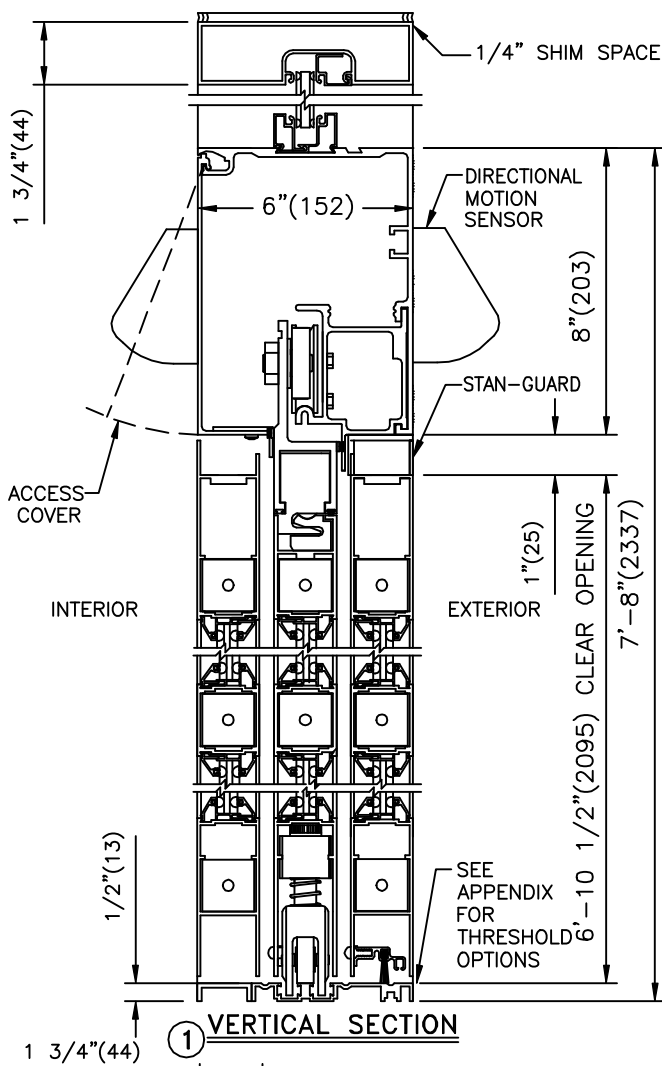


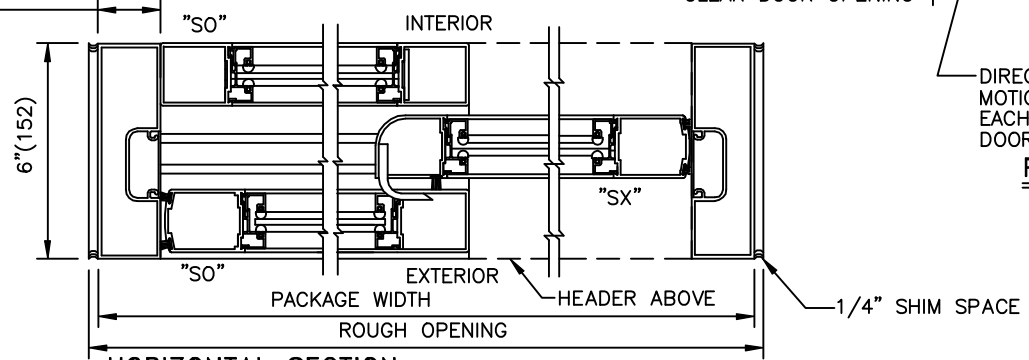
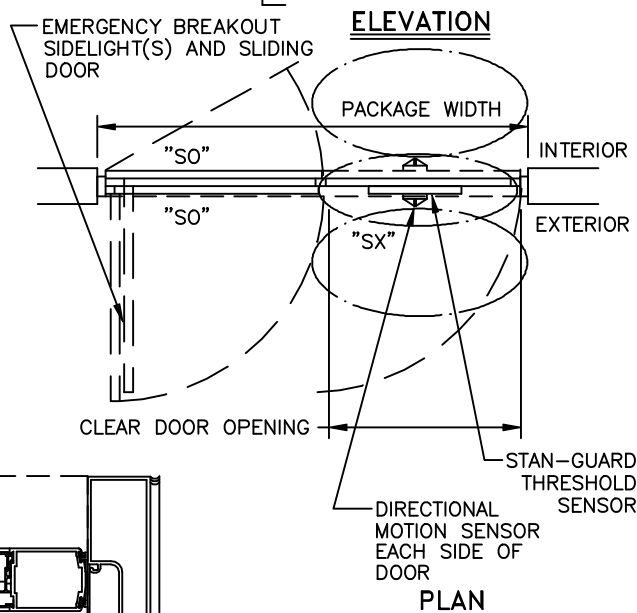
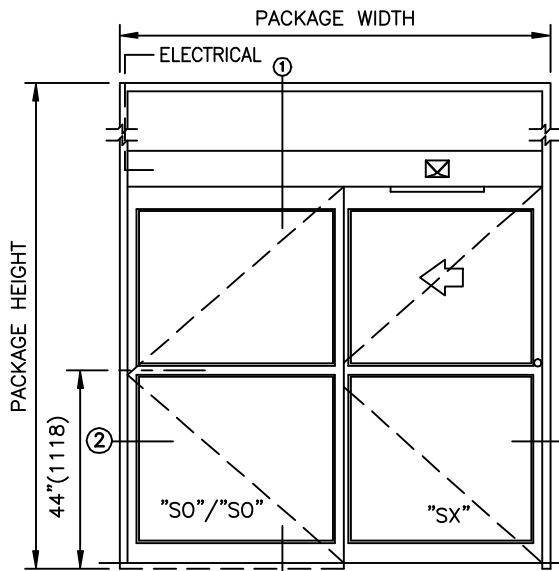
**STANLEY**

JOB NAME \_\_\_\_\_  
 LOCATION \_\_\_\_\_  
 DOOR NUMBER \_\_\_\_\_  
 SHEET \_\_\_\_\_ OF \_\_\_\_\_

**DURA-GLIDE  
 3000**  
 LEFT HAND SINGLE  
 SLIDE WITH INTERIOR  
 SIDELIGHT AND TRANSOM



STANLEY DOOR PACKAGES ARE INDIVIDUALLY ENGINEERED TO FIT YOUR JOB REQUIREMENTS



SAMPLE PACKAGE WIDTH INFORMATION

PKG. WIDTH	CLEAR DOOR OPENING	SLIDING DOOR / PANEL WIDTH	EMERGENCY BREAKOUT WIDTH
7'-0"	36"	41 1/2"	75"
8'-0"	42"	47 1/2"	87"
9'-0"	48"	53 1/2"	99"

NOTES:

1. DETAILS NOT TO SCALE.
2. ELECTRICAL REQUIREMENTS:  
 120VAC, 5AMPS MIN. TO OPERATOR BY ELECTRICAL CONTRACTOR.
3. SEE APPENDIX FOR ADDITIONAL INFORMATION.

SINGLE SLIDE FORMULAS

PACKAGE WIDTH = 2 X CLEAR DOOR OPENING + 13 5/8"  
 CLEAR DOOR OPENING = 1/2 PACKAGE WIDTH - 6 13/16"  
 EMERGENCY BREAKOUT WIDTH = PACKAGE WIDTH - 9"  
 DOOR PANEL WIDTH = 1/2 PACKAGE WIDTH - 9/16"