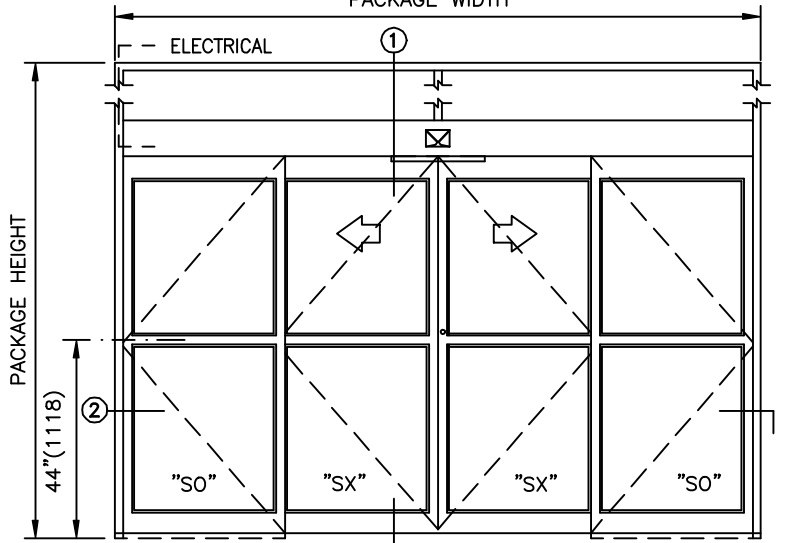
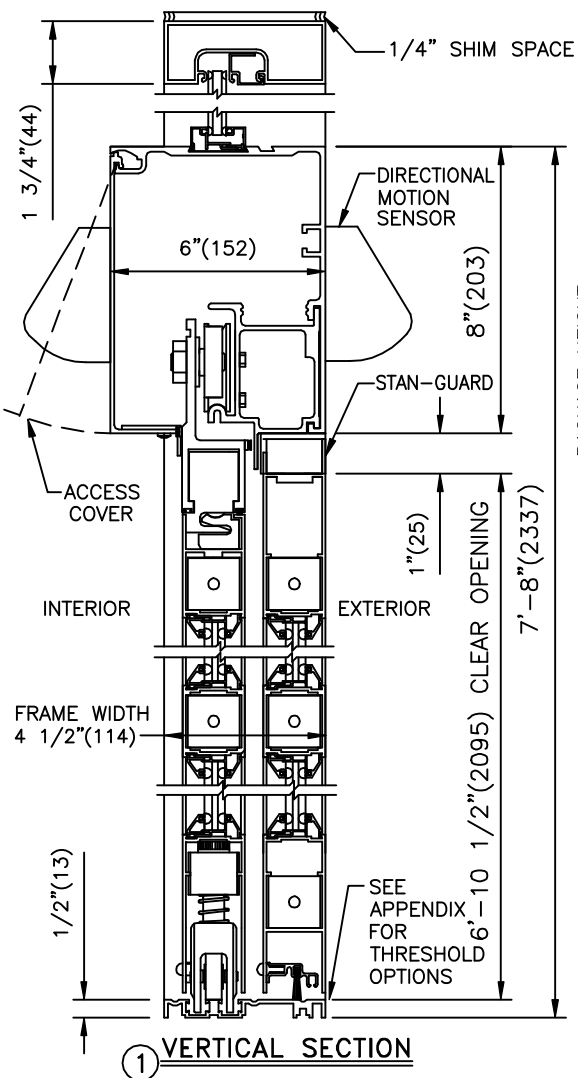


STANLEY

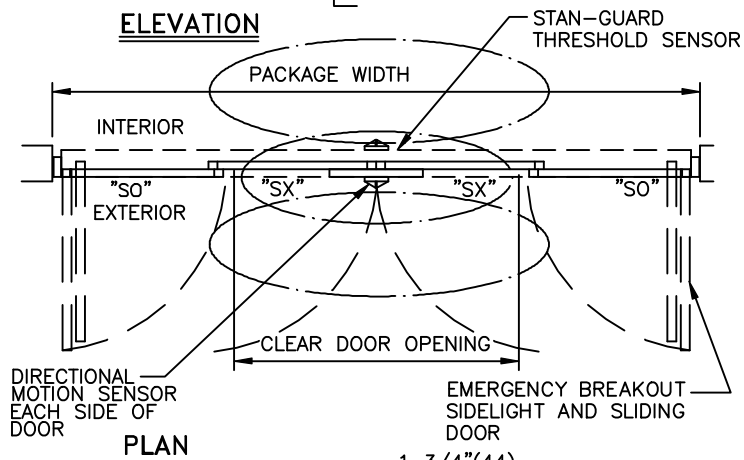
JOB NAME _____
 LOCATION _____
 DOOR NUMBER _____
 SHEET _____ OF _____

**DURA-GLIDE
 3000**
 BI-PART
 WITH TRANSOM

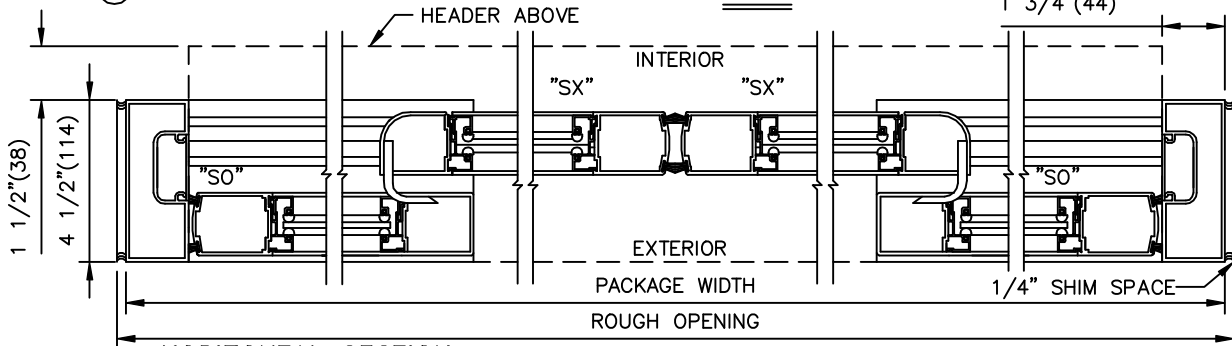
STANLEY DOOR PACKAGES ARE INDIVIDUALLY
 ENGINEERED TO FIT YOUR JOB REQUIREMENTS
 PACKAGE WIDTH



ELEVATION



PLAN



HORIZONTAL SECTION

SAMPLE PACKAGE WIDTH INFORMATION

PKG. WIDTH	NOMINAL CLEAR DOOR OPENING	SLIDING DOOR / PANEL NOM. WIDTH	EMERGENCY BREAKOUT NOM. WIDTH
10'-0"	48"	30 1/2"	105"
12'-0"	60"	36 1/2"	129"
14'-0"	72"	42 1/2"	153"

NOTES:

1. DETAILS NOT TO SCALE.
2. ELECTRICAL REQUIREMENTS:
 120VAC, 5AMPS MIN. TO OPERATOR BY ELECTRICAL CONTRACTOR.
3. SEE APPENDIX FOR ADDITIONAL INFORMATION.

BI-PART FORMULAS

PACKAGE WIDTH = 2 X CLEAR DOOR OPENING + 23 3/8"
 CLEAR DOOR OPENING = 1/2 PACKAGE WIDTH - 11 11/16"
 EMERGENCY BREAKOUT WIDTH = PACKAGE WIDTH - 14 1/2"
 DOOR PANEL WIDTH = 1/4 PACKAGE WIDTH + 3/8"