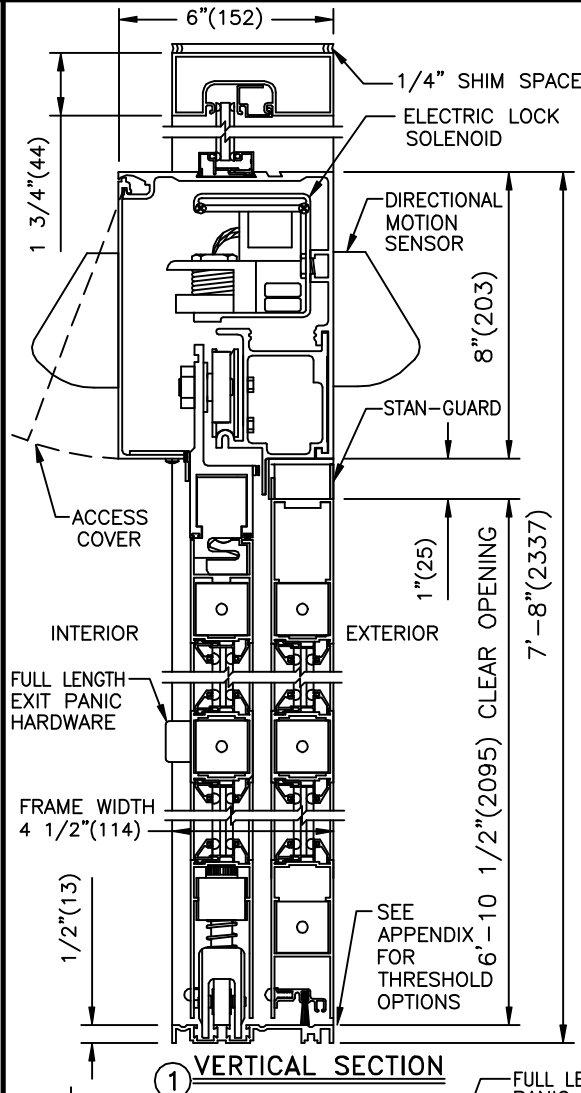


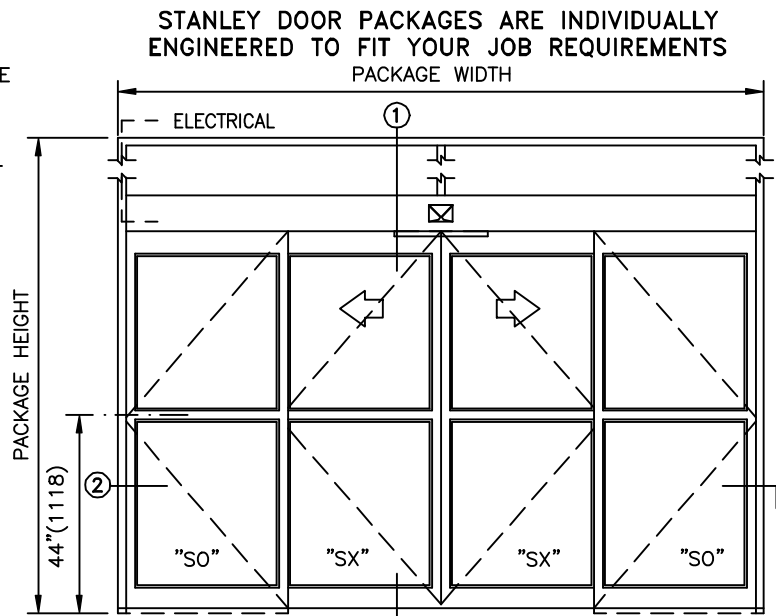
**STANLEY**

JOB NAME \_\_\_\_\_  
 LOCATION \_\_\_\_\_  
 DOOR NUMBER \_\_\_\_\_  
 SHEET \_\_\_\_\_ OF \_\_\_\_\_

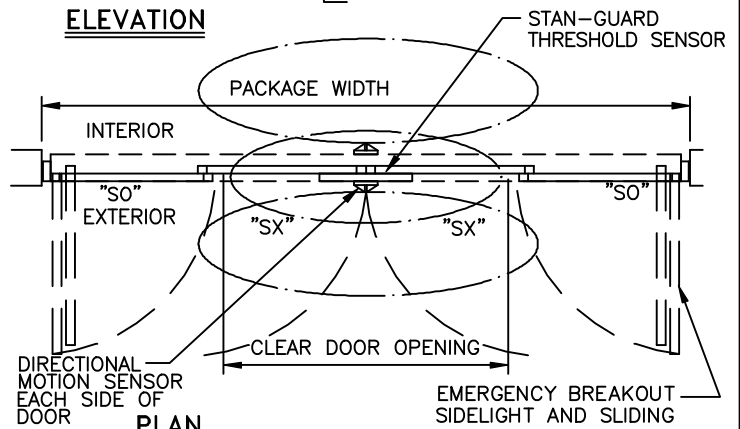
**DURA-GLIDE  
 3000  
 BI-PART  
 WITH TRANSOM AND  
 AUTOMATIC LOCKING**



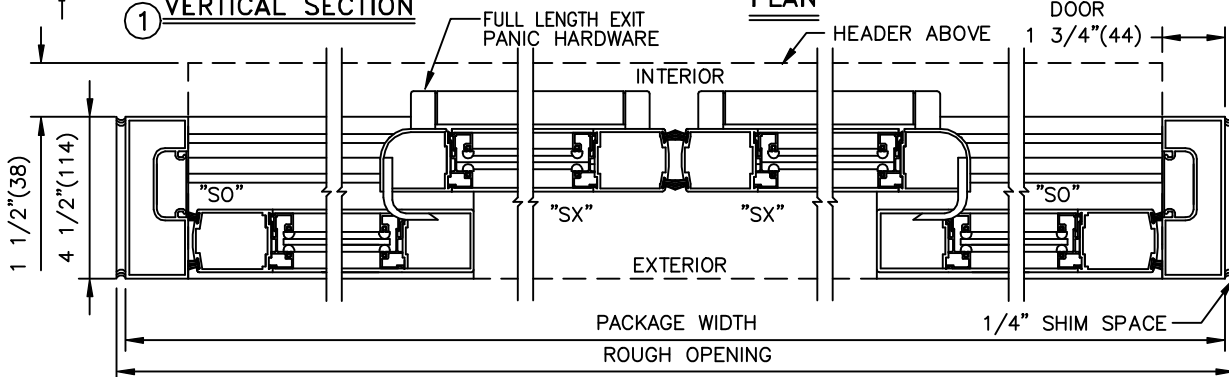
1 VERTICAL SECTION



ELEVATION



PLAN



2 HORIZONTAL SECTION

SAMPLE PACKAGE WIDTH INFORMATION

PKG. WIDTH	NOMINAL CLEAR DOOR OPENING	SLIDING DOOR / PANEL NOM. WIDTH	EMERGENCY BREAKOUT NOM. WIDTH
10'-0"	48"	30 1/2"	105"
12'-0"	60"	36 1/2"	129"
14'-0"	72"	42 1/2"	153"

NOTES:

1. DETAILS NOT TO SCALE.
2. ELECTRICAL REQUIREMENTS:  
 120VAC, 5AMPS MIN. TO OPERATOR BY ELECTRICAL CONTRACTOR.
3. SEE APPENDIX FOR ADDITIONAL INFORMATION.

BI-PART FORMULAS

PACKAGE WIDTH = 2 X CLEAR DOOR OPENING + 23 3/8"  
 CLEAR DOOR OPENING = 1/2 PACKAGE WIDTH - 11 11/16"  
 EMERGENCY BREAKOUT WIDTH = PACKAGE WIDTH - 14 1/2"  
 DOOR PANEL WIDTH = 1/4 PACKAGE WIDTH + 3/8"