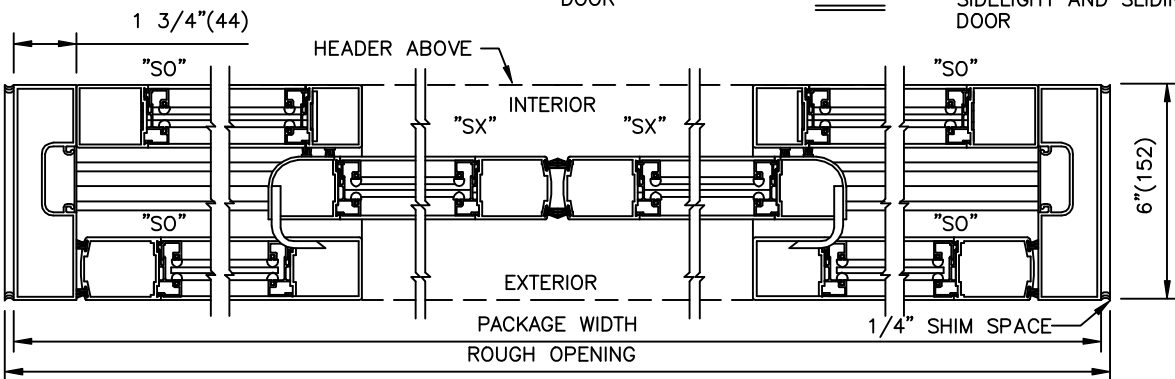
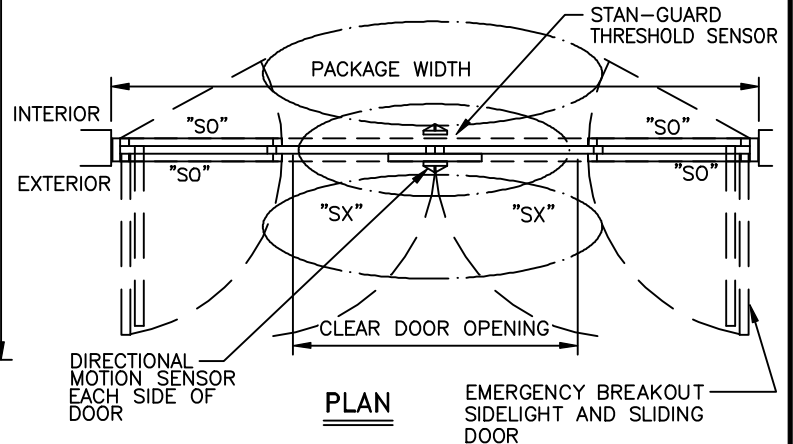
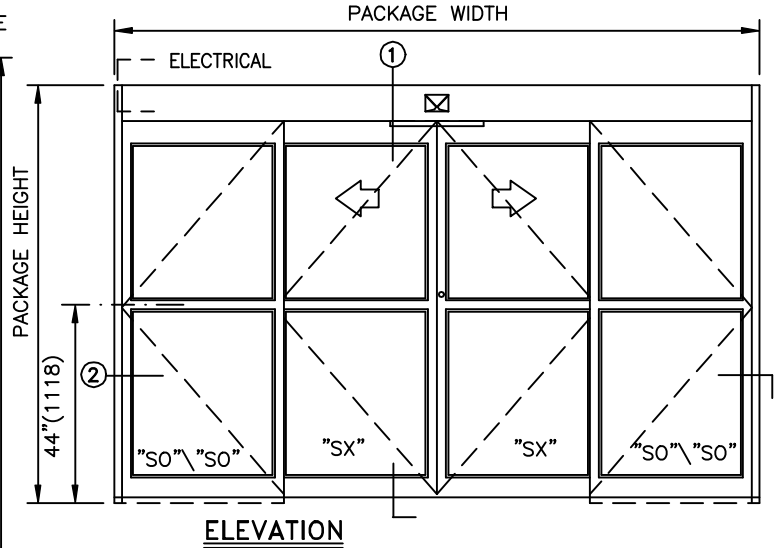
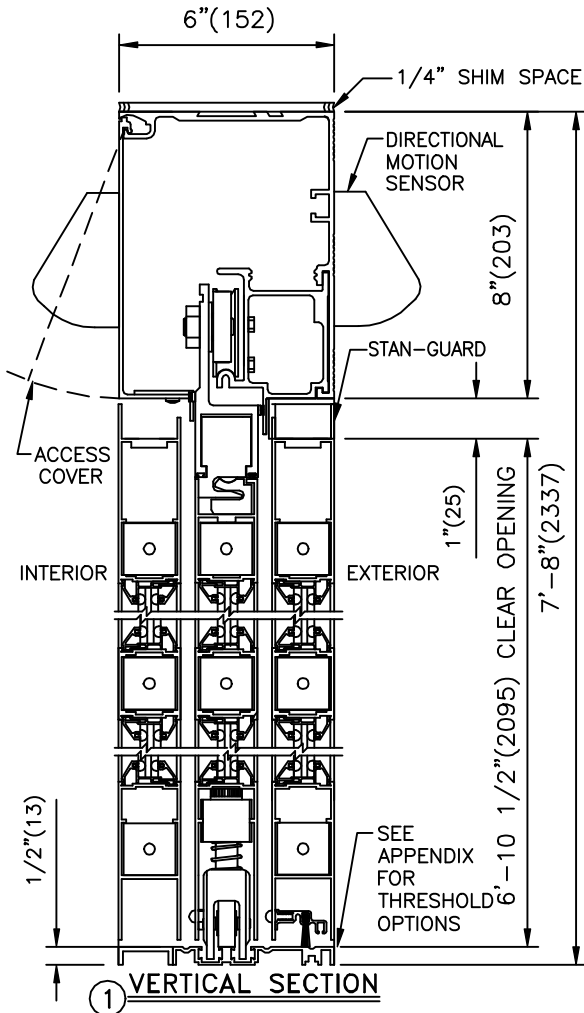


STANLEY

JOB NAME _____
 LOCATION _____
 DOOR NUMBER _____
 SHEET _____ OF _____

**DURA-GLIDE
 3000**
 BI-PART WITH
 INTERIOR SIDELIGHTS

STANLEY DOOR PACKAGES ARE INDIVIDUALLY
 ENGINEERED TO FIT YOUR JOB REQUIREMENTS



2 SAMPLE PACKAGE WIDTH INFORMATION

PKG. WIDTH	NOMINAL CLEAR DOOR OPENING	SLIDING DOOR / PANEL NOM. WIDTH	EMERGENCY BREAKOUT NOM. WIDTH
10'-0"	48"	30 1/2"	105"
12'-0"	60"	36 1/2"	129"
14'-0"	72"	42 1/2"	153"

- NOTES:
 1. DETAILS NOT TO SCALE.
 2. ELECTRICAL REQUIREMENTS:
 120VAC, 5AMPS MIN. TO OPERATOR BY ELECTRICAL CONTRACTOR.
 3. SEE APPENDIX FOR ADDITIONAL INFORMATION.

BI-PART FORMULAS

PACKAGE WIDTH = 2 X CLEAR DOOR OPENING + 23 3/8"
 CLEAR DOOR OPENING = 1/2 PACKAGE WIDTH - 11 11/16"
 EMERGENCY BREAKOUT WIDTH = PACKAGE WIDTH - 14 1/2"
 DOOR PANEL WIDTH = 1/4 PACKAGE WIDTH + 3/8"